

SAN MATEO COUNTY FAIR
HEALTH & SAFETY POLICY
LIVESTOCK

We're excited to welcome you back at the Fair!

Your **safety** is our #1 priority.

Kindly follow the safety procedures we've implemented to **#StopTheSpread**.

Thank you!

DISCLAIMER

- Exhibitors and their family members acknowledge that **personal protective equipment ("PPE")** designed to reduce the chances of exposure to or infection with the virus **may not be readily available at the fair's facilities** for their participation in the livestock events.
- Exhibitors and their family members acknowledge that **the San Mateo County Fair may not, and is under no legal duty to, provide any PPE** to Exhibitors or their family members. **Exhibitors and their families should provide their PPE for participation in the San Mateo County Fair's livestock events.**

PREVENTION MEASURES



- All exhibitors, their family members, and other related persons participating in the livestock events shall **sign the release and waiver of liability agreement before entering any livestock event.**
- All clubs are expected to have their exhibitors, family members, and other related people participating in the livestock events **fill out the Exposure Control Plan (health questionnaire) daily before entry** through Gate 9 and give it to security. If security or anyone receiving the questionnaire sees an exhibitor state "Y" (YES), the Livestock Office, Fair Manager, or CEO will be contacted immediately.
- Each exhibitor, their family members, and other related persons participating in the livestock events will receive a **temperature check** by security at the Livestock Gate (Gate 9) before entry. **Any person presenting a body temperature above 100.4 degrees Fahrenheit will not be permitted to participate** in the livestock events or receive access to the fair.
- All exhibitors, their family members and other related persons participating in the livestock events shall **comply with all health and safety orders, rules, and guidelines** related to the Virus promulgated by the State of California, County of San Mateo, City of San Mateo, and the San Mateo County Fair.



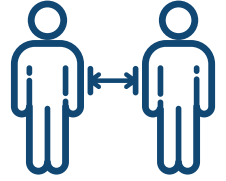
○ PRACTICE SOCIAL DISTANCING – WEAR A MASK



• Without limiting the foregoing, Exhibitor, their family members, and other related persons participating in the livestock events agree that they will wear a face mask at all times including exhibiting, wash hands frequently, use hand sanitizer or antibacterial wipes, maintain social distancing, and submit to non-invasive body temperature measurement.

• Inside the arena during shows only groups of no more than 10 people and under 3 households can sit together.

• Folding Chairs set on the show ring during the auction and youth awards will be separated by 6' per each group of no more than 10 people and under 3 households.

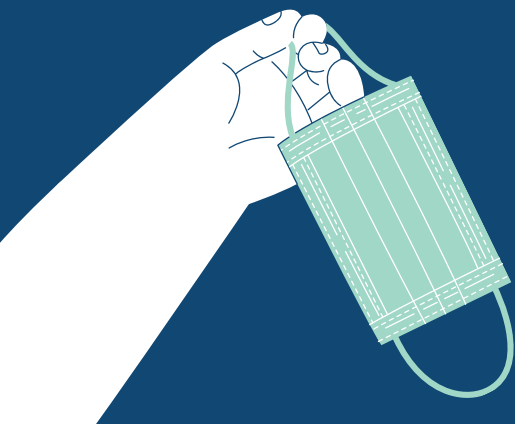


COVID-19 WARNING

Exhibitors and their family members understand and acknowledge that participation in the Fair's livestock events or use of Fair's facilities may expose them to contact with one or more persons who have been infected with, and/or exposed to, the Virus.

Exhibitors and their family members further understand that participation in the Fair livestock events or use of the facilities may expose them to contact with surfaces or objects that contain the Virus and may serve as a means for transmission of the virus to others who participate in the livestock events or use the facilities.

Based on the foregoing, Exhibitors and their family members understand and acknowledge that participation in the State Fair livestock events and use of the facilities may expose them, along with others with whom they may come in contact after they leave Fair's facilities, to a risk of infection with the Virus, which may cause significant and serious illness, bodily injury, disfigurement, temporary or permanent disability, and/or death.



You can do your part by **wearing a mask** and practicing **social distancing**.



Where Tradition Meets Innovation